



Speed-Master® 4500

Proven performance, heavy-duty construction and dependable design stand-up to extreme industrial environments



Bulldog-tough panel

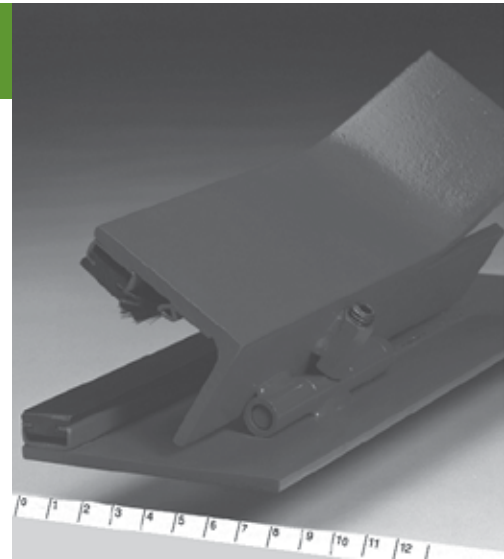
Recommended for exterior or interior door openings up to 30'0" wide x 675 square feet, the Speed-Master® 4500 is constructed of patented, interlocking aluminum hinges which act as integral windbars, creating a sectional panel design that provides panel stability and increased wind resistance. Sliding the panels apart without removing the entire door or roll assembly allows for inexpensive replacement, and a full-width vision area provides unobstructed viewing. Since the Speed-Master® bottom bar consists of fewer parts, does not support a tensioning system, and requires less repair time, it can be replaced at a lower cost than comparable products.



Dependable low-profile design

The Model 4500 has hinged guide tracks of heavy duty, painted steel as shown at right. These low-profile tracks contain anti-friction strips, are impact resistant and fit into most applications. This unique hinged design allows for quick and easy access to and re-insertion of the panel. Full perimeter draft seals provide dust and odor containment, as well as general environmental control.

The rugged and dependable nature of the Speed-Master® 4500 makes it the ideal high performance door for demanding applications such as mass transit garages, warehouses and waste management facilities.



Standard features

- Panel: 1/8" thick "BULLDOG XT" PVC. Colors: orange, blue, black and gray.
- Vision: Two clear PVC full-width vision areas starting approx. 35" off floor.
- Direct-Drive Motor: 4 kW, TEFC with flexible coupler, 230 / 460 volt, 3 ph, 60 Hz, with brake release for manual override.
- Operating Speed: 24" per second up and down.
- Control Box: NEMA 4 enclosure, with PLC and adjustable time delay. Momentary contact e-stop and reset buttons on control box face.
- Safety Devices: Electric automatic reversing edge, anodized aluminum bottom bar with breakaway tabs, panel stop sensor and two photocells.



The motor / gearbox and panel material are guaranteed to be free of defects in materials and workmanship for 5 years. All other mechanical and electrical components are warranted to be free of defects for 2 years.

